

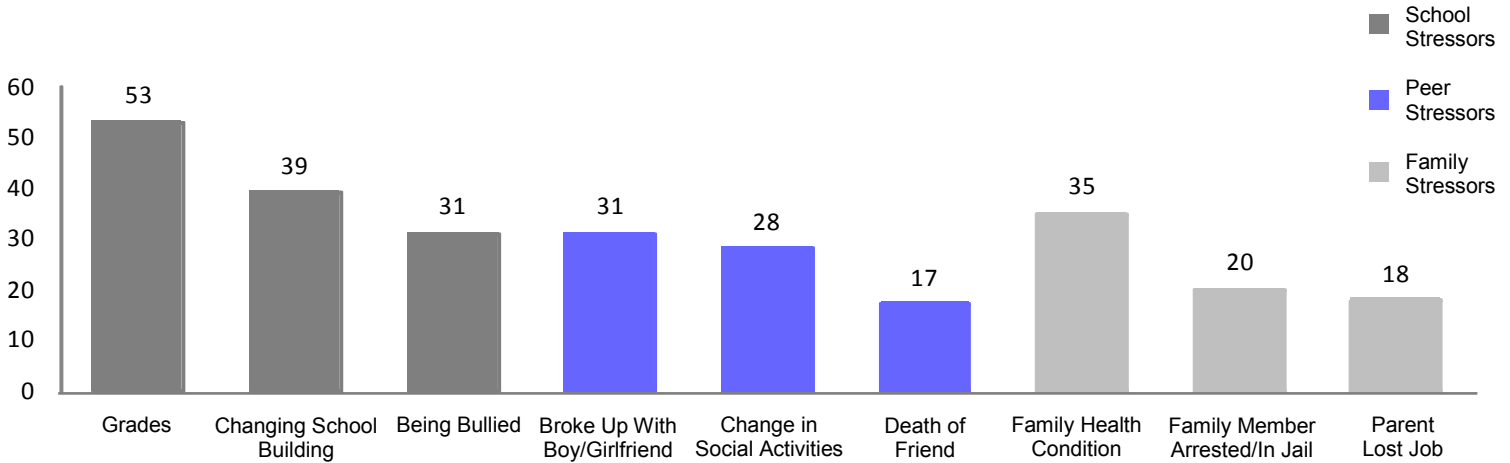
FAST TRAC School-Based Mental Health Evaluation Pilot Group Demographics & Outcomes

EVALUATION BRIEF

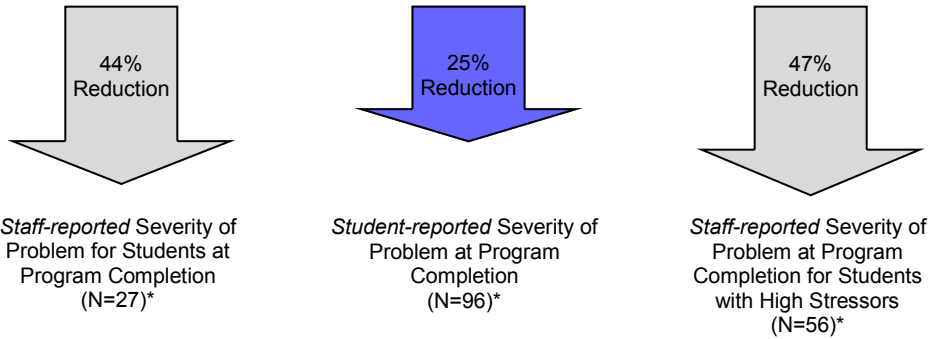
Fall 2013 Quarterly Report

Initial evaluation pilot programs utilizing School-Based Mental Health (SBMH) Prevention Services were launched in the 2012-2013 academic year within five area schools. Data were collected to assess student assets, family, school, and peer stressors, and staff and student-reported severity of problem at SBMH program enrollment and completion. One hundred twenty-four students participated in the pilot, approximately 64% of whom were female, ranging from the sixth grade to the twelfth grade.

STUDENT-REPORTED STRESSORS (% responding yes)



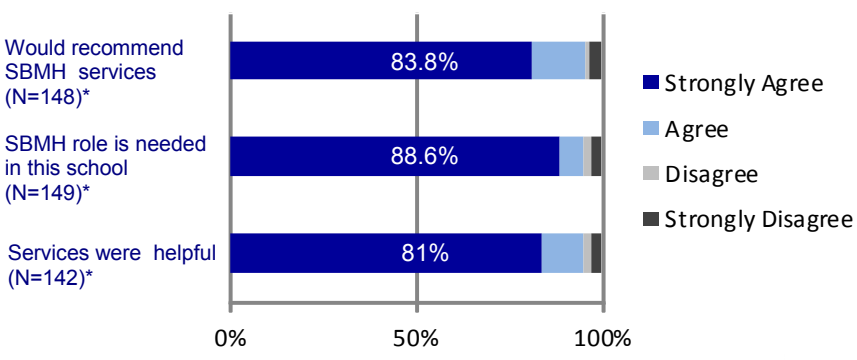
Students and staff both report a reduction in severity of problems after completing SBMH services, including those students with high stressors.



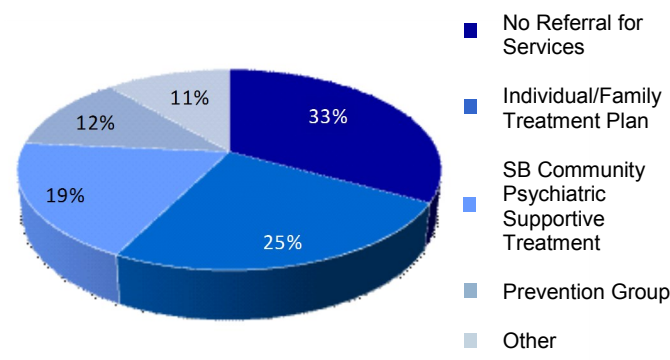
Despite youth enrolled in School-Based Mental Health having many life stressors, the most frequently reported asset was a desire to do well in school (94%).

Notes: Data reported at intake and completion derived from the Developmental Assets Profile (DAP) survey. Severity of Problem: "Often or Always a Problem" response on DAP survey. Developmental assets as measured by the DAP are defined as strengths, supports, and non-cognitive factors that occur in five contextual areas: personal, social, school, family, and community.

STAFF-REPORTED SATISFACTION WITH SBMH PREVENTION SERVICES EVALUATION PILOT PROGRAM



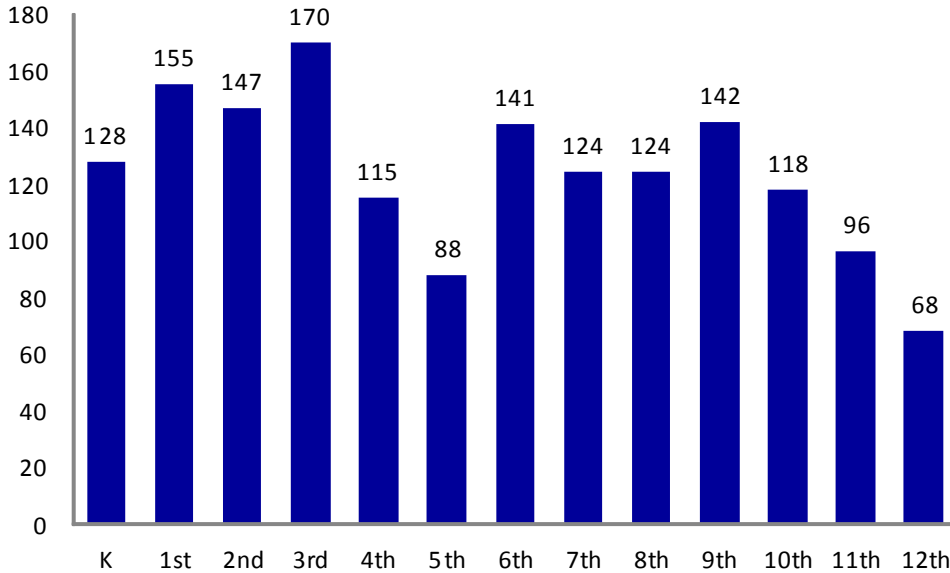
REFERRALS OF STUDENTS FOR SERVICES MADE AT EVALUATION PILOT PROGRAM COMPLETION (N=106)*



* N=Number of Participants

In September 2009, the Clermont County Mental Health & Recovery Board was awarded a six year Cooperative Agreement from the Center for Mental Health Services (CMHS) of the Substance Abuse and Mental Health Services Administration (SAMHSA) to enhance Clermont County's System of Care, named FAST TRAC. FAST TRAC funds were used to enhance School-Based Mental Health (SBMH) services funded by the Clermont County Mental Health & Recovery Board through local levy dollars and Medicaid billing. SBMH services are designed to promote positive mental health, reduce non-cognitive barriers to learning, reduce the risk factors associated with school failure and help students experience successes. Prevention Services provide students with short-term support and interventions. Additionally, more intensive therapeutic services are available to those students who would benefit from continued support. SBMH services are provided in every Clermont County school district.

**SCHOOL-BASED MENTAL HEALTH PREVENTION
CLERMONT COUNTY STUDENTS SERVED BY GRADE
(N=1,624)***



* N=Number of Participants

OFFERING ON-SITE SBMH SERVICES IS WORKING FOR STUDENTS AND TEACHERS

"Many of our students wouldn't receive any mental health services if the school-based services were not available."

-Teacher, Marr Cook Elementary

"Students have someone they can go to during the school day to address mental health needs. This helps prevent problems and also gives students the tools they need to be successful."

-Teacher, Glen Este High School

"The most helpful for me was having someone to collaborate with regarding my student."

-Teacher, Felicity-Franklin Middle School

RECOGNIZED VALUE BY SCHOOL STAFF

95.9%

Agree services provided by Child Focus, Inc. were helpful to student success in school.

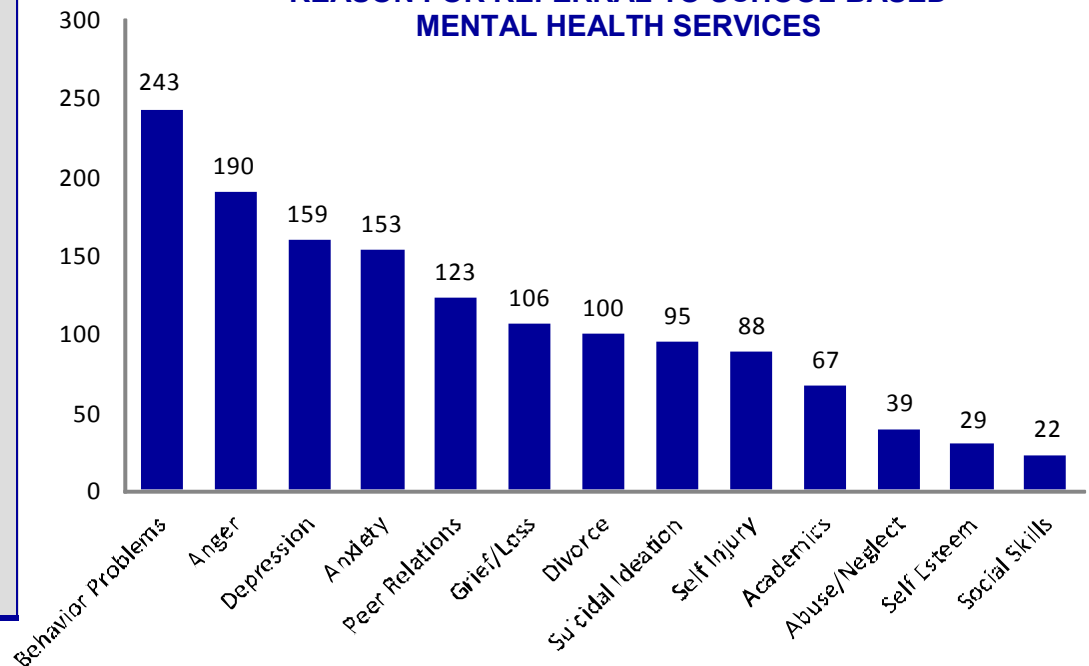
96.9%

Say that the role of School-Based Mental Health is needed in their school.

97.0%

Would recommend School-Based Mental Health services to other schools and teachers.

REASON FOR REFERRAL TO SCHOOL-BASED MENTAL HEALTH SERVICES



Note: Responses of 'Other' to Reasons for Referral=206



Clermont FAST TRAC, a system of care initiative of the Clermont County Mental Health & Recovery Board, is funded by a grant from the United States Department of Health and Human Services, Substance Abuse and Mental Health Services Administration.