

The FAST TRACker

Your Community Guide To FAST TRAC Results

Issue 3 Summer 2014

About FAST TRACker

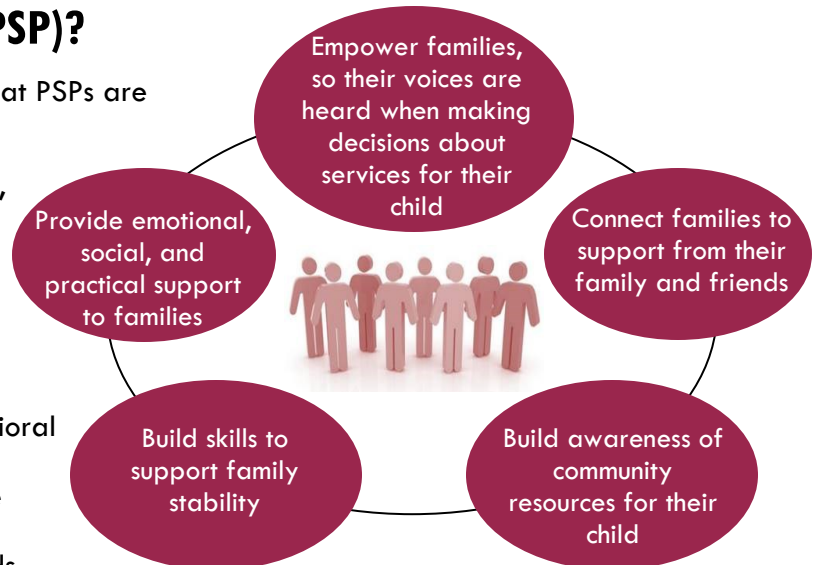
This guide is intended to provide information about the Clermont County system of care called FAST TRAC for youth with emotional and behavioral challenges and their families. FAST TRAC is a federal grant program overseen by the Clermont County Mental Health & Recovery Board. This issue of FAST TRACker is about the Peer Support Partner program and how FAST TRAC has enhanced support to caregivers, youth, and families in our community. Below are the results of an evaluation to see how it is working throughout Clermont County.

What is a Peer Support Partner (PSP)?

The following are thoughts from caregivers on what PSPs are able to offer to them and their families.

Through **support, empathy, and encouragement**, PSPs assist caregivers in growing **confidence to make important family and life decisions**. PSPs give **guidance and help improve communication** between families and agencies that can **improve their quality of life**.

Caregivers of children with emotional and behavioral challenges often also become **educators and advocates**. PSPs share an understanding of these roles. They can provide the **support that many caregivers may not have** from family and friends. Having lived in similar situations, PSPs know how to assist families in **making connections that can change lives**.



Goals of the PSP Program

Who uses a Peer Support Partner?

All caregivers with a youth involved with Wraparound services, a FAST TRAC program, are offered the opportunity to be matched with a PSP. In addition to the challenges that can come with caring for a youth with emotional and/or behavioral challenges, caregivers may experience strain in and outside the home. At times, they have **little support to assist** in connecting them to the resources they need, making matters even more difficult.

The overall goal of the PSP program is to **support and empower families to advocate for themselves and their children** in the community. This can help form **new social networks and strengthen partnerships** for all youth and caregivers in Clermont County.

45.4% of caregivers are currently employed.

For those caregivers not currently employed:

57.1% report health problems or a disability.

22.1% report transportation issues or other family responsibilities.

13.0% have children with behavioral or emotional problems that require care.

7.8% have limited or no access to childcare.

Turn this page over to see more of what PSPs are doing for youth and families

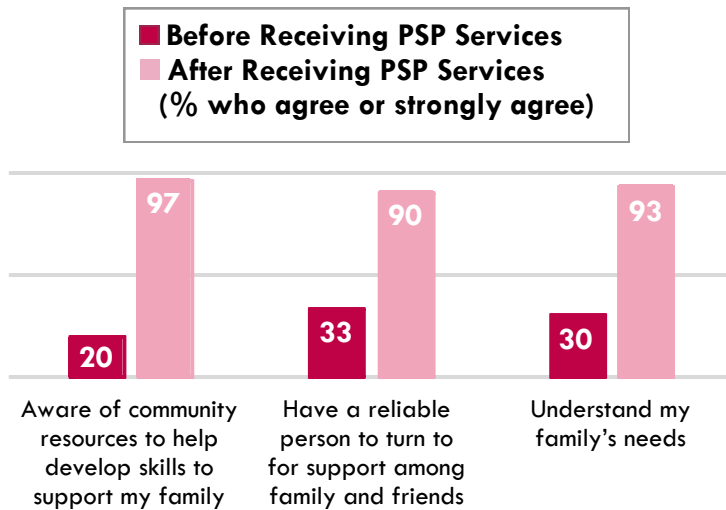


Clermont FAST TRAC, a system of care initiative of the Clermont County Mental Health & Recovery Board, is funded by a grant from the United States Department of Health and Human Services, Substance Abuse and Mental Health Services Administration.

www.clermontfasttrac.org

Are PSP supports working in Clermont County?

With PSPs, caregivers are **feeling supported and empowered.**



Caregivers in Clermont County are **getting the support only a PSP can provide.**

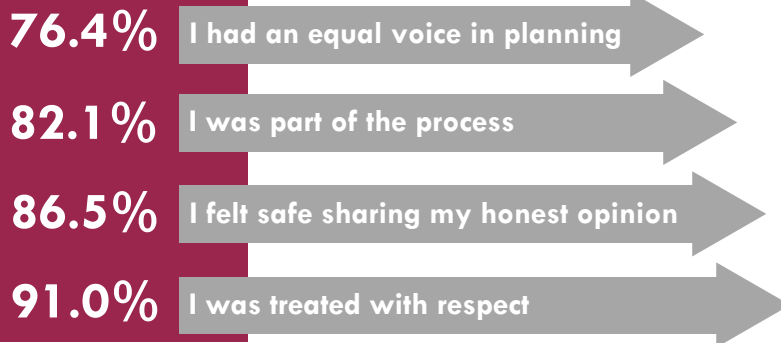
*"Our PSP helped us **get information that we didn't know how to get.**"*

*"The PSP was **able to verify to the team and psychiatrist the problems we were having with our grandson that others never see.**"*

*"It was a **blessing** to have our PSP on our team."*

*"I absolutely love my Wraparound facilitator and peer support partner. When in need, **they are there for me and my family.**"*

Caregivers are **satisfied and engaged with their PSP**



What can I do as a parent or a community member?

Help us spread the word about the great work that Peer Support Partners are doing for our youth and families and about everything the FAST TRAC System of Care is doing in our community!

- Pass this information on to family members, neighbors, co-workers, and even your local Trustees, Commissioners, Representatives or Senator! Remember, FAST TRAC is funded by a grant that will end in 2015. **Services will not continue to grow unless your community supports them!**
- Join a FAST TRAC Workgroup to **share your perspective as a youth or family member in our community.**
Call: 732-5400

For more information on FAST TRAC, visit our website:
<http://www.clermontfasttrac.org> or call us: 732-5400

If you'd like to know more about the Peer Support Partner program, contact:
Jean Houston, Lead Family Contact
Families Connected, Inc.
Email: FASTTRAC.JH@hotmail.com
Or call: 732-5034

